

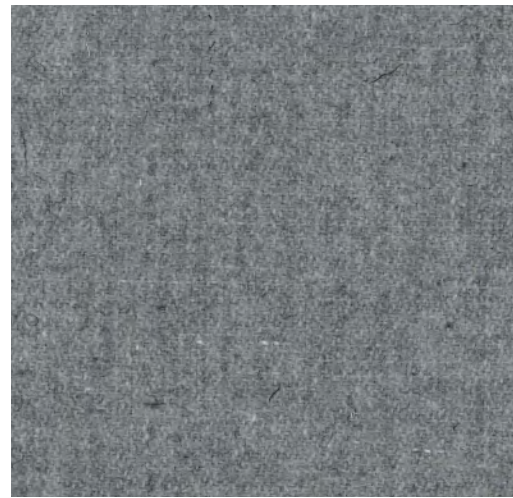


MAHORA
— CONCEPT —

NUANCIER

**Attention : les coloris peuvent varier selon les réglages et la luminosité de votre écran. Un doute ? Une question ?
Contactez-nous au 01 87 124 124**

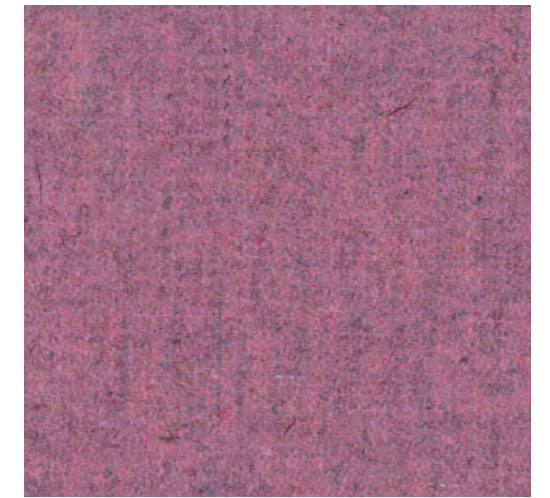
Fabric



FA-LightGrey 1000

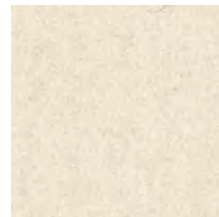


FA-Kiesel 7

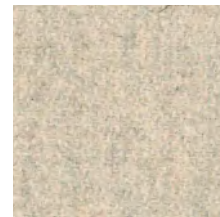


Fabric

FA-Pink 73



FA-Ivory 101



FA-Naturel 1



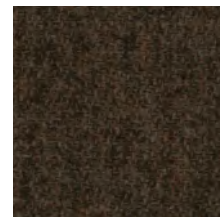
FA-Beige 1037



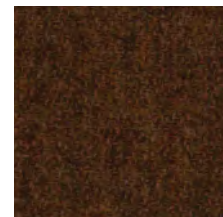
FA-Dolphin 180



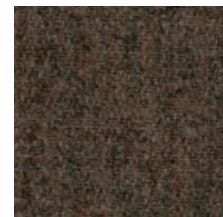
FA-Shitake 124



FA-DarkBrown 18



FA-Rust 29



FA-Taupe 1008



FA-Mint 50



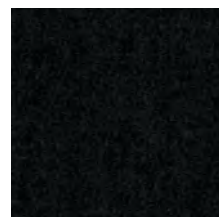
FA-Azure 144



FA-Olive 53



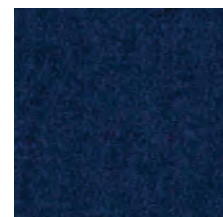
FA-Army 14



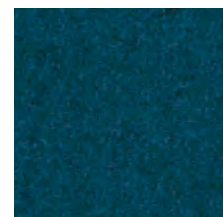
FA-Zwart 1003



FA-MidGrey 1001



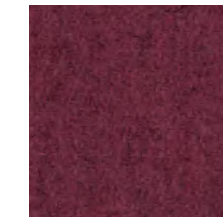
FA-Blue 45



FA-Petrol 56



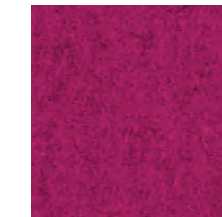
FA-Purple 78



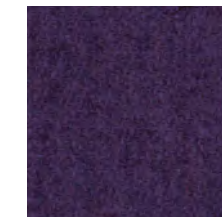
FA-Aubergine 74



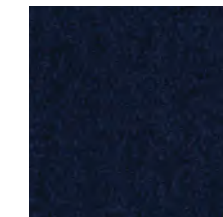
FA-Prune 76



FA-Fuchsia 77



FA-Violet 72



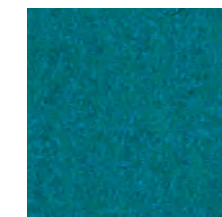
FA-Navy 1007



FA-Indigo 90



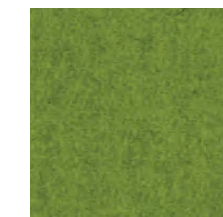
FA-LightBlue 41



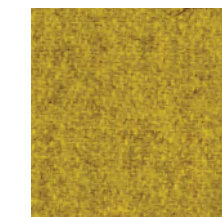
FA-Aqua 143



FA-OceanBlue 147



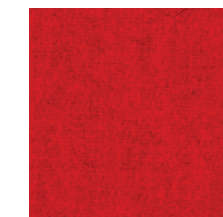
FA-Pistache 52



FA-Yellow 24



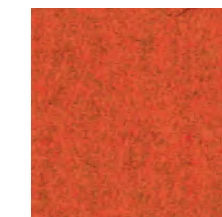
FA-Red 2011



FA-Fire 139



FA-Mandarin 129



FA-Orange 2012

CAT A Fabric

Specifications

Composition 70% Recycled Wool, 25% Recycled Polyacryl,
5% Recycled Other Fabrics

Weight 405 g/m² | 11.94 oz/yd²

Width 148 cm | 58.27"

Thickness 0,8 mm | 0.031 inch

Abrasion resistance 40.000 Martindale, 50.000 Wyzenbeek

Flammability EU: EN 1021.1/2006 | BS EN 1021.1/2006 (cigarette)
EN 1021.2/2006 | BS EN 1021.2/2006 (match)

USA: CAL TB 117 | ASTM E84 CLASS A

Fastness to light EU: 4 | USA: 4

Fastness to rubbing EU: Wet 3-4 | Dry 4-5

Fastness to crocking USA: Wet 5 | Dry 5



Maintenance

Vacuum clean regularly. Don't wash. Don't remove the Fabric from the product.

Treat spillages immediately. Professional dry clean or wipe clean with a pH neutral soap and a damp cloth.



CAT A Fabric



samples@buzzi.space | usa.samples@buzzi.space | www.buzzi.space



M0026-SALES.03.1

NO BOUNDARIES





MAHORA
— CONCEPT —

Mahora Concept

21 rue Gounod
92210 Saint-Cloud
01 87 124 124

www.mahora-concept.com