



MAHORA  
— CONCEPT —

# NUANCIER

**Attention : les coloris peuvent varier selon les réglages et la luminosité de votre écran.  
Un doute ? Une question ? Contactez-nous au 01 87 124 124**

# Furnier geölt

oiled veneer | placage bois, huilé

Buche | beech | hêtre



BB02 Buche furniert, geölt | oiled beech veneer | placage bois hêtre, huilé

Ahorn | maple | érable



AB02 Ahorn furniert, geölt | oiled maple veneer | placage bois érable, huilé

Eiche | oak | chêne



EB02 Eiche furniert, geölt | oiled oak veneer | placage bois chêne, huilé

Esche | ash | frêne



ESB02 Esche furniert, geölt | oiled ash veneer | placage bois frêne, huilé

Nuss | walnut | noyer



NB02 Nuss furniert, geölt | oiled walnut veneer | placage bois noyer, huilé

# Colorbeizen

colour stains | teintes couleurs

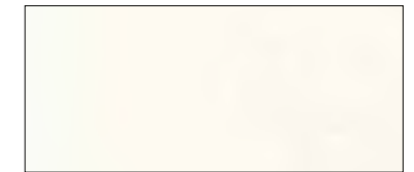
Für Oberflächen in Buche massiv, Buche Sperrholz oder Buche Furnier | For surfaces in solid beech, beech plywood and beech veneer | Pour surfaces en hêtre massif, bois hêtre ou placage bois hêtre



BC54 Schwarz | black | noir



BC52 Anthrazit | anthracite | anthracite



BC12 Weiß | white | blanc



BC56 Violett | violet | violet



BC66\* Dunkelblau | dark blue | bleu foncé



BC58\* Gelbgrün | yellow-green | vert anis



BC64\* Pink | pink | rose bonbon



BC62\* Orange | orange | orange

\* Nicht möglich für Tische und Korpusmöbel.  
Not possible with tables or frame furniture.  
Non disponibles pour les tables et les corps de meubles.

# DKS | HPL

DKS | Dekorspanplatte | laminates (MFC) | revêtements mélamines  
 HPL | high pressure laminates | revêtements stratifiés



D44 (DKS) | H1979 (HPL)  
 Buche natur | natural beech | hêtre naturel



D64 (DKS) | H1334 (HPL)  
 Eiche natur | natural oak | chêne naturel

Anpassungsbeizen für Ausführung in Buche  
 Matching stain for beech surface  
 Contretypepage sur finition hêtre



D74 (DKS) | H1277 (HPL)  
 Akazie hell | light acacia | acacia, clair



D50 (DKS) | H3306 (HPL)  
 Eiche anthrazit | anthracite oak | chêne anthracite



BAK10



BE30



D48 (DKS) | H1615 (HPL)  
 Kirsch natur | natural cherry | cerisier naturel



D72 (DKS) | H260 (HPL)  
 Amerik. Nuss | American walnut | noyer d'Amérique



B24



BN30



D80 (DKS) | H080 (HPL)  
 Schwarz | black | noir



D66 (DKS) | H412 (HPL)  
 Ahorn natur | natural maple | érable naturel



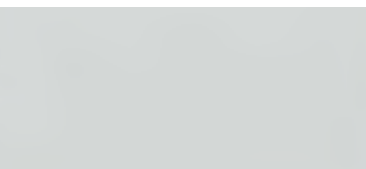
BA02



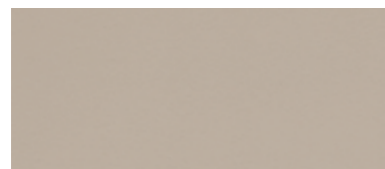
D32 (DKS) | H077 (HPL)  
 Anthrazit | anthracite | anthracite



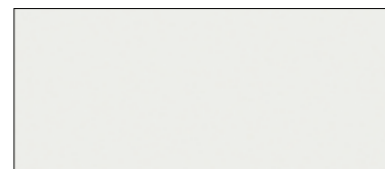
D62 (DKS) | H075 (HPL)  
 Dunkelgrau | dark grey | gris foncé



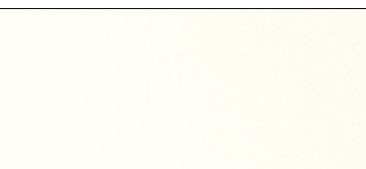
D22 (DKS) | H074 (HPL)  
 Pastellgrau | pastel grey | gris pastel



D60 (DKS) | H727 (HPL)  
 Steingrau | stone grey | gris pierre



D58 (DKS) | H742 (HPL)  
 Kieselgrau | pebble grey | gris gravier



D56 (DKS) | H085 (HPL)  
 Weiß | white | blanc

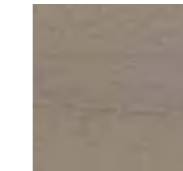
Alle Dekore werden deckungsgleich in DKS und HPL als Standardoberfläche geführt  
 All decors are available as standard surfaces congruently either in laminate (MFC) or in HPL  
 Tous les décors sont disponibles dans les versions standards identiques en revêtement mélamine DKS ou stratifié HPL

# DKS Struktur

MFC Structure | DKS Structure



D70 Eiche greige | oak grey-beige | chêne grège



BE22

Anpassungsbeizen für Ausführung in Buche  
 Matching stain for beech surface  
 Contretypepage sur finition hêtre



D76 Hickory



BH10

# HPL Fenix

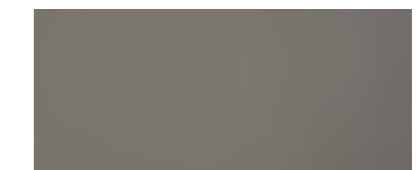
HPL Fenix | HPL Fenix



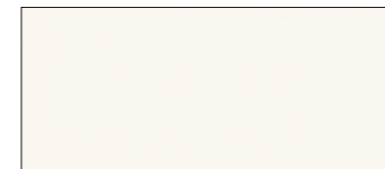
HF720 Schwarz | black | noir



HF724 Anthrazit | anthracite | anthracite



HF718 Grau | grey | gris



HF032 Weiß | white | blanc

# Compactplatte

compact top | plateau compact



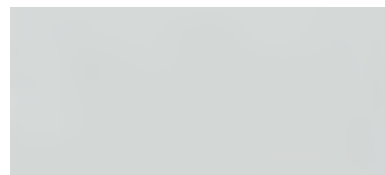
C80 Schwarz | black | noir



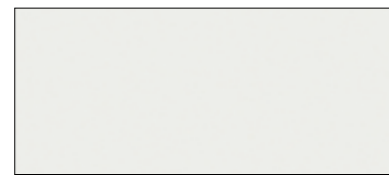
C32 Anthrazit | anthracite | anthracite



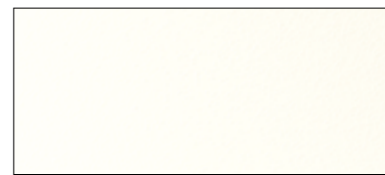
C62 Dunkelgrau | dark grey | gris foncé



C22 Pastellgrau | pastel grey | gris pastel



C58 Kieselgrau | pebble grey | gris gravier



C40 Weiß | white | blanc

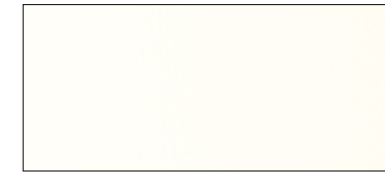
# Schichtstoffoberflächen

laminated surfaces | surface en stratifié

arta | update | update\_b



300 Schwarz | black | noir



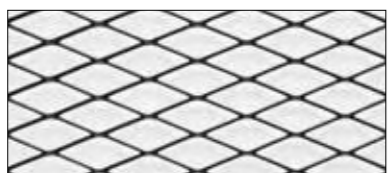
304 Weiß | white | blanc

# cage Schränke

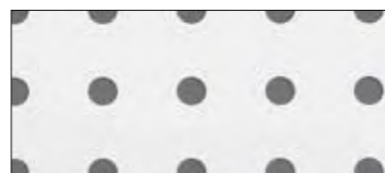
cage cabinets | cage armoires



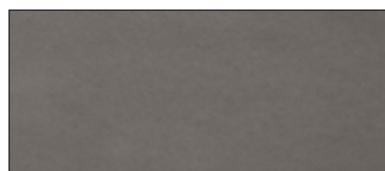
YB02 Altholz Eiche geölt | reclaimed oak, oiled | bois ancien de chêne, huilé



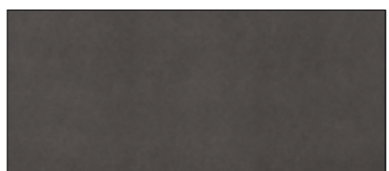
W06\* Streckmetall | metal mesh | métal déployé



W04\* Lochblech | perforated metal plate | tôle perforée



X12 Eternit quarz | fibre cement quartz | Eternit coloris quartz



X14 Eternit schiefer | fibre cement slate | Eternit coloris gris ardoise

\* Pulverbeschichtung lt. Farbtonkarte  
Powder-coated acc. to WH collection  
Revêtement par poudrage selon nuancier

# Metalloberflächen

metal surfaces | surface en métal

Pulverbeschichtung | powder coating | revêtements par poudrage



9005M Tiefschwarz | pitch black | noir profond



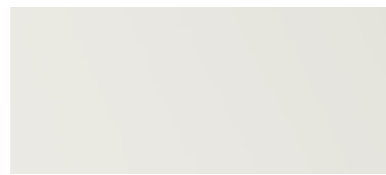
38M Anthrazit | anthracite | anthracite



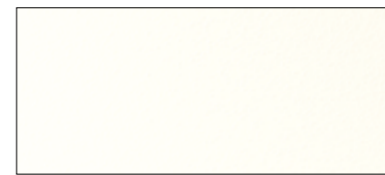
55 Eloxal Silber | eloxal silver | gris élox



56 Champagner | champagne | champagne



9002 Grauweiß | grey white | gris-blanc



9016 Weiß | white | blanc

Chrom / Aluminium / Edelstahl

chrome / aluminium / stainless steel | chrome / aluminium / inox



4 Chrom | chrome | chrome

7 Aluminium poliert | polished aluminium | aluminium poli

6 Edelstahl poliert hochglänzend | polished stainless steel, high-gloss finish | inox poli extra-brillant



MAHORA  
— CONCEPT —

**Mahora Concept**  
21 rue Gounod  
92210 Saint-Cloud  
01 87 124 124

[www.mahora-concept.com](http://www.mahora-concept.com)