

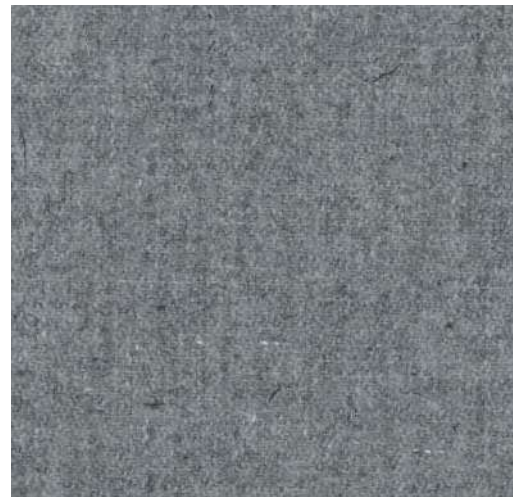


MAHORA  
— CONCEPT —

# NUANCIER

**Attention : les coloris peuvent varier selon les réglages et la luminosité de votre écran. Un doute ? Une question ?  
Contactez-nous au 01 87 124 124**

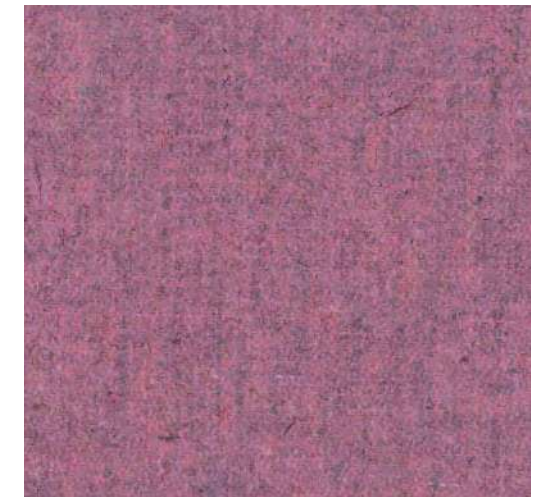
Fabric



FA-LightGrey 1000

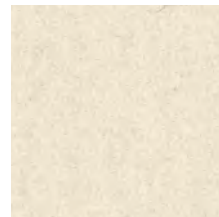


FA-Kiesel 7

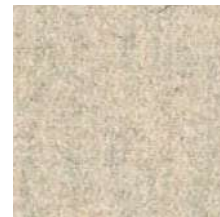


Fabric

FA-Pink 73



FA-Ivory 101



FA-Naturel 1



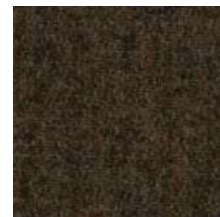
FA-Beige 1037



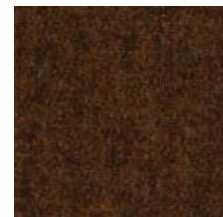
FA-Dolphin 180



FA-Shitake 124



FA-DarkBrown 18



FA-Rust 29



FA-Taupe 1008



FA-Mint 50



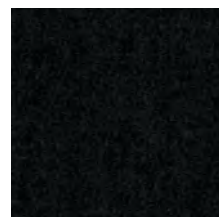
FA-Azure 144



FA-Olive 53



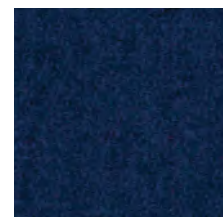
FA-Army 14



FA-Zwart 1003



FA-MidGrey 1001



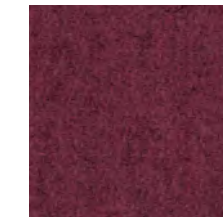
FA-Blue 45



FA-Petrol 56



FA-Purple 78



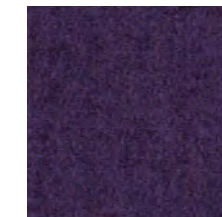
FA-Aubergine 74



FA-Prune 76



FA-Fuchsia 77



FA-Violet 72



FA-Navy 1007



FA-Indigo 90



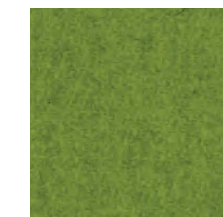
FA-LightBlue 41



FA-Aqua 143



FA-OceanBlue 147



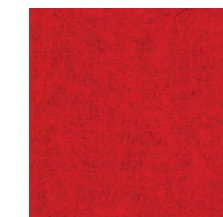
FA-Pistache 52



FA-Yellow 24



FA-Red 2011



FA-Fire 139



FA-Mandarin 129



FA-Orange 2012

# CAT A Fabric

## Specifications

**Composition** 70% Recycled Wool, 25% Recycled Polyacryl,  
5% Recycled Other Fabrics

**Weight** 405 g/m<sup>2</sup> | 11.94 oz/yd<sup>2</sup>

**Width** 148 cm | 58.27"

**Thickness** 0,8 mm | 0.031 inch

**Abrasion resistance** 40.000 Martindale, 50.000 Wyzenbeek

**Flammability** EU: EN 1021.1/2006 | BS EN 1021.1/2006 (cigarette)  
EN 1021.2/2006 | BS EN 1021.2/2006 (match)

USA: CAL TB 117 | ASTM E84 CLASS A

**Fastness to light** EU: 4 | USA: 4

**Fastness to rubbing** EU: Wet 3-4 | Dry 4-5

**Fastness to crocking** USA: Wet 5 | Dry 5



## Maintenance

Vacuum clean regularly. Don't wash. Don't remove the Fabric from the product.

Treat spillages immediately. Professional dry clean or wipe clean with a pH neutral soap and a damp cloth.



# CAT A Fabric

NO BOUNDARIES



M0026-SALES.03.1



[samples@buzzi.space](mailto:samples@buzzi.space) | [usa.samples@buzzi.space](mailto:usa.samples@buzzi.space) | [www.buzzi.space](http://www.buzzi.space)



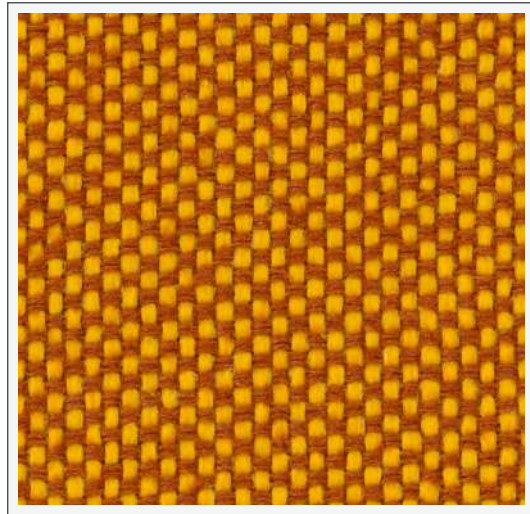
**Trevira CS+ | Trevira CS**



Trevira CS+: width 150cm | 59,06 inch



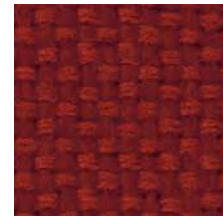
Trevira CS: width 140cm | 55,12 inch



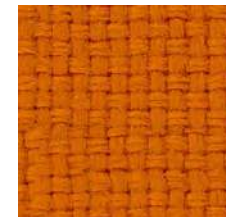
TRCS+ Hazy Mocca 9302



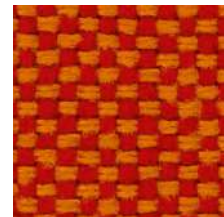
TRCS Mocca 1029



TRCS Berry 4017



TRCS Orange 4030



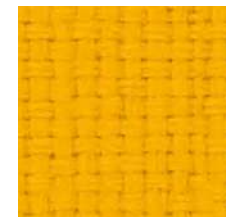
TRCS Hazy Orange 9404



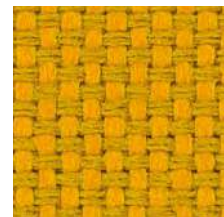
TRCS Red 4027



TRCS+ Hazy Red 9405



TRCS Yellow 3008



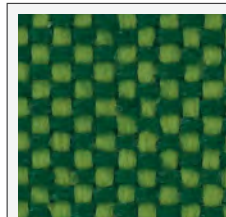
TRCS Hazy Yellow 9309



TRCS Mustard 3019



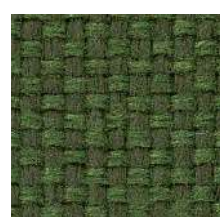
TRCS Pistache 7009



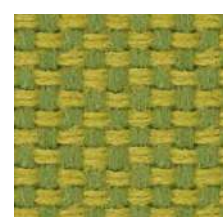
TRCS+ Hazy Green 9704



TRCS Hazy Jade 9703



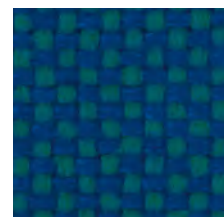
TRCS Jade 7020



TRCS Hazy Pistache 9702



TRCS Hazy Ocean 9705



TRCS Hazy Petrol 9602

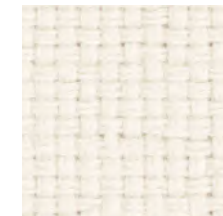


TRCS Petrol 6014



TRCS+ Ocean 6091

**Trevira CS+ | Trevira CS**



TRCS White 9106



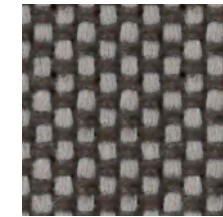
TRCS Cloud 8001



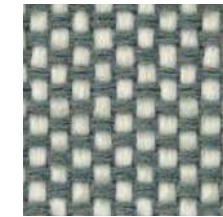
TRCS+ Greige 1006



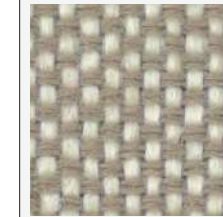
TRCS+ Grey 8009



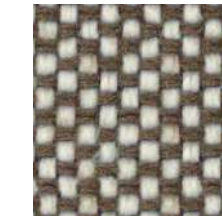
TRCS Rock 9804



TRCS Hazy Grey 9107



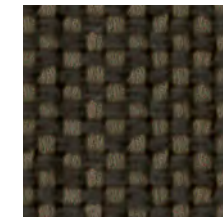
TRCS+ Hazy Greige 9211



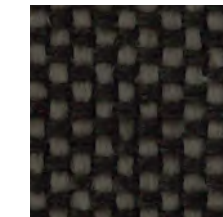
TRCS Sand 9212



TRCS+ Clay 2006



TRCS Hazy Clay 9217



TRCS Clay Black 9222



TRCS Marble 9228



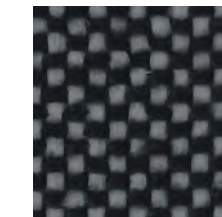
TRCS Purple 9502



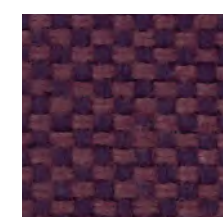
TRCS Black 8033



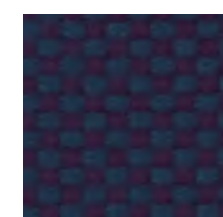
TRCS+ Anthracite 9805



TRCS Grey Black 9803



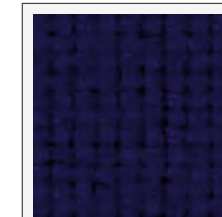
TRCS Fig 9503



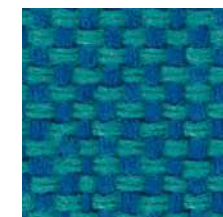
TRCS Hazy Purple 9501



TRCS Indigo Black 9604



TRCS+ Indigo 6080



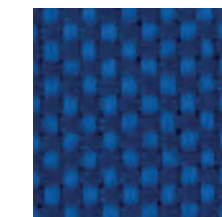
TRCS Hazy Blue 9601



TRCS Lavender 6006



TRCS Blue 6075



TRCS Blue Black 9603

# CAT A Trevira CS+ | Trevira CS

## Specifications

**Composition** 100% Polyester, Trevira CS

**Weight** 420 g/m<sup>2</sup> | 12.39 oz/yd<sup>2</sup>

**Width** Trevira CS+ 150 cm | 59.06" - Trevira CS 140 cm | 55.12"

**Abrasion resistance** 100.000 Martindale, 90.000 Wyzenbeek

**Flammability** EU: BS 5852 part II: CRIB 5 | BS 7176 Medium Hazard  
M1 | B1 | C1 | EN 1021/1-2 | IMO Res. A652 (16)  
USA: CAL TB 117

**Fastness to light** EU: 6 | USA: 5

**Fastness to rubbing** EU: Wet 4-5 | Dry 4-5

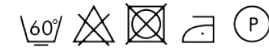
**Fastness to crocking** USA: Wet 5 | Dry 5

**Match** Weight ±5% | Width ±2%



## Maintenance

Vacuum clean regularly. Don't remove the Trevira CS+ | Trevira CS from the product. Treat spillages immediately. Professional dry clean or wipe clean with a pH neutral soap and a damp cloth.



# CAT A Trevira CS+ | Trevira CS

NO BOUNDARIES





Velvet



VE-Gold 401



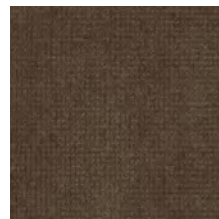
VE-Burgundy 201



VE-Blush 704



VE-Pearl 902

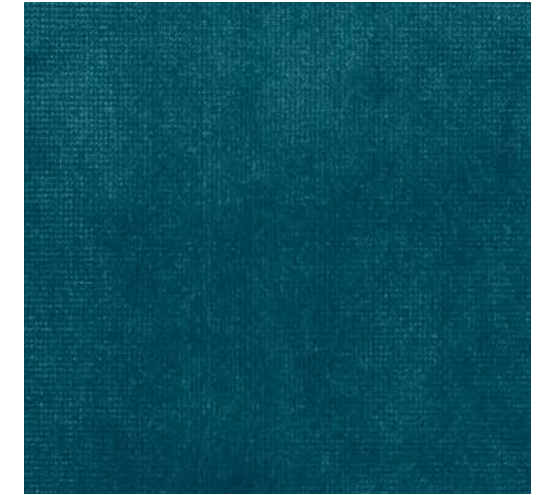


VE-Emperador 106



VE-Amber 300

Velvet



VE-Peacock 600



VE-Botanic 501



VE-Crocodile 502



VE-Scarab 505



VE-Sky 601



VE-Prussian 606

# CAT B Velvet

## Specifications

**Composition** 100% PES  
**Weight** 375 g/m<sup>2</sup> | 11.06 oz/yd<sup>2</sup>  
**Width** 140 cm | 55.12"  
**Thickness** 0,7mm | 0.0275"  
**Abrasion resistance** >100.000 Martindale  
**Fastness to light** EU: 4-5  
**Fastness to rubbing** EU: Wet 4 | Dry 4-5  
**Pilling** EU: 4-5  
**Match** Weight ±5% | Width ±2%

## Maintenance

Vacuum clean regularly. Don't wash. Don't remove the Velvet from the product. Treat spillages immediately. Professional dry clean or wipe clean with a pH neutral soap and a damp cloth.



# CAT B Velvet



NO BOUNDARIES





MAHORA  
— CONCEPT —

**Mahora Concept**

21 rue Gounod  
92210 Saint-Cloud  
01 87 124 124

[www.mahora-concept.com](http://www.mahora-concept.com)